

GISELLE BEIGUELMAN - FAUD-USP 2023

Arquivos digitais: **entre a inteligência distribuída e o colonialismo dos dados**



"Entendemos por objeto digital não apenas um arquivo digitalizado de um conteúdo, como uma imagem, mas sim todo o arranjo de camadas de informação que permitem diferentes formas de utilização desse objeto"

Dalton Martins



INTELIGÊNCIA DISTRIBUÍDA

Crowdsourcing

Editatona
**Mulher, Arte
e História**

27/03
10h-16h



Maratona de edição na Wikipédia
Os indígenas no museu

17/04 - 10h às 16h



Maratona de edição na Wikipédia

**Lutas pela
Independência
do Brasil**

29/05 - 10h às 16h



Glam Museu Paulista

2019

- Disponibilização das imagens do acervo do museu (35 mil)
- 6 mil metadados estruturados
- Melhoria de 2.500 verbetes na Wikipédia (Maratonas de edição)



Be a virtual volunteer!

Help transcribe Library of Congress documents. Volunteers create and review transcriptions to improve search, access, and discovery of these pages from history.



GET STARTED

Learn how to volunteer. Anyone can contribute!



TRANSCRIBE

No account needed! Type what you see on the page.



REVIEW

Review is the crucial final step! Register to edit and complete transcriptions.

Whitman notebooks & diaries
Transcribe Walt Whitman's notebooks, letters, and poetry drafts!

By The People

LIBRARY OF CONGRESS, 2018-

987.000 páginas para transcrição distribuídas em 39 campanhas

710.000 com transcrições completas

139.000 páginas aguardando revisão

296.000 transcrições completas integradas ao catálogo online da
Biblioteca

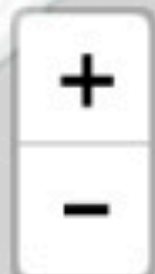


View from the foot of Fulton St

View in high resolution in [Digital Collections](#)

📍 Manhattan (New York, N.Y.)

📅 1952-05-16



© Mapbox, © OpenStreetMap

Here!
I think

↻ New

✕ Skip

✓ Submit

Space/Time directory

"Google Maps do passado"

Qualquer local histórico poderia ser encontrado em qualquer tempo

Catálogo histórico dos materiais culturais da cidade, com fotos, artigos de jornal, páginas amarelas, referências literárias e dados censitários

NYPL, 2013

Uma base de código que outras cidades podem emular para criar interfaces semelhantes.

Obsolescência

Original de segunda geração

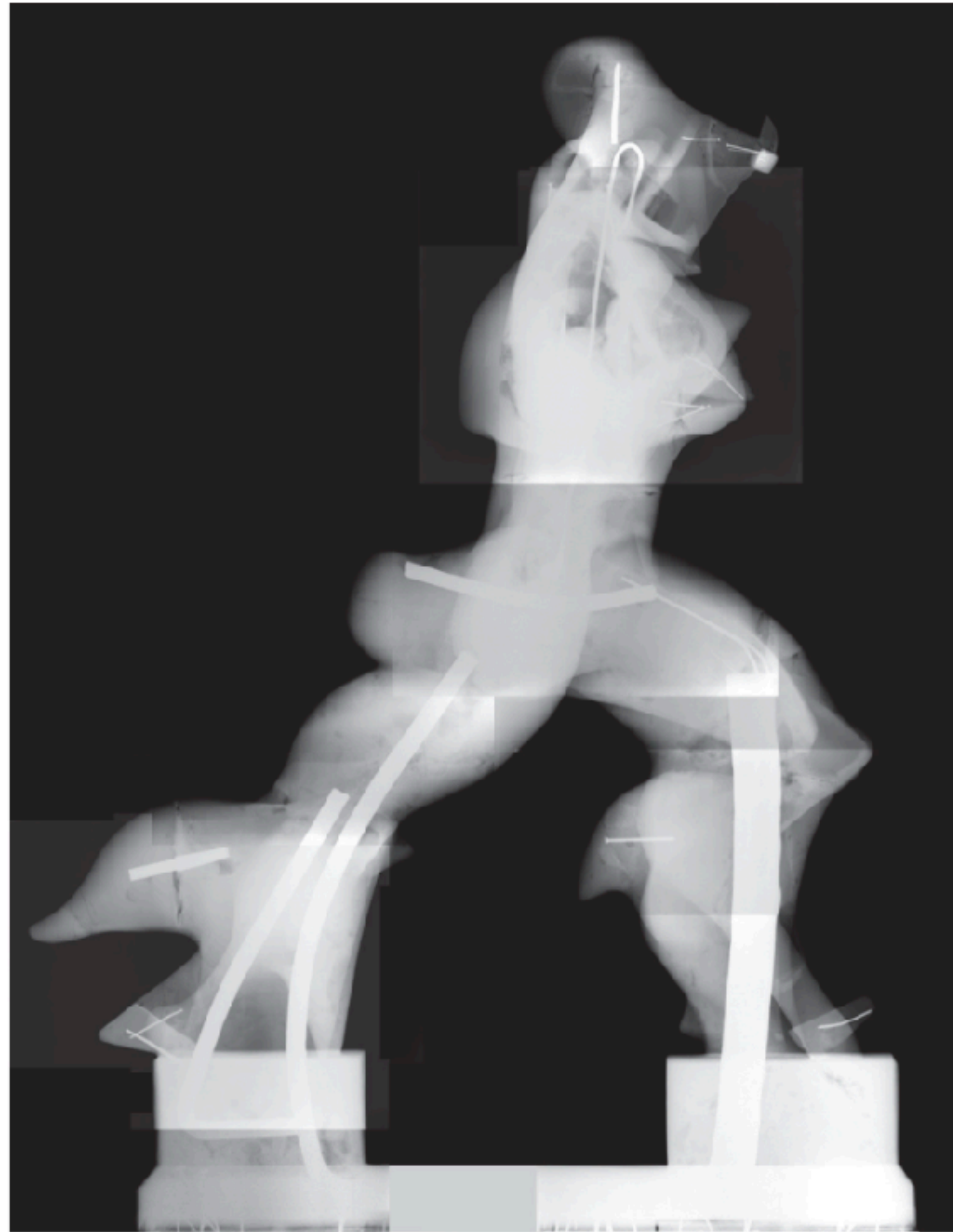


FIG. 12

Duas grossas peças de metal nas pernas, 2016.

Análise por Imageamento. Profa. Dra. Márcia Rizutto, Nemitala Addec, Pedro Campos e Elizabeth Kajiya e Grupo de Dosimetria: Paulo Costa e equipe.

Two thick pieces of metal on the legs, 2016.

Imaging Analysis. Profa. Dra. Márcia Rizutto, Nemitala Addec, Pedro Campos and Elizabeth Kajiya and Dosimetry Group: Paulo Costa and team.

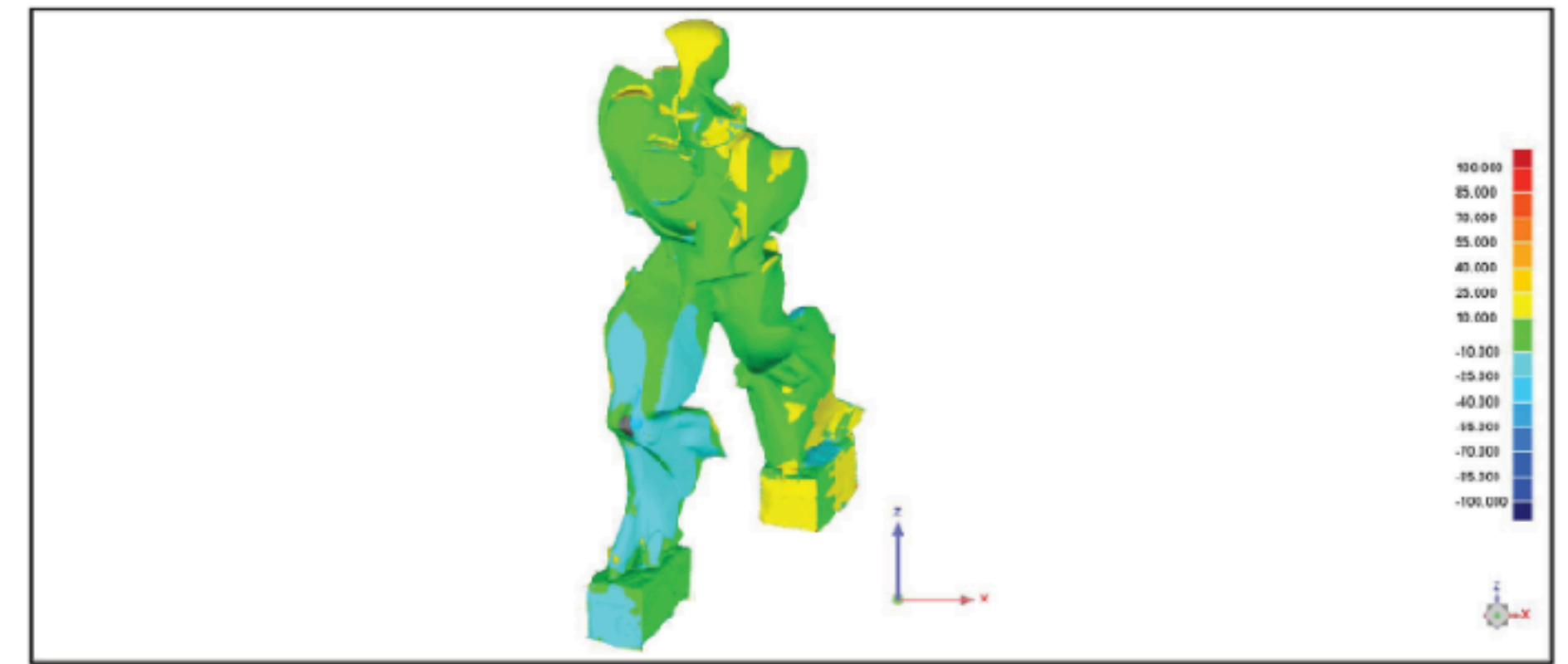


FIG. 13

Malha de pontos da comparação entre o bronze de Milão e o gesso do MAC USP.

Points mesh of the comparison between Milan bronze and plaster of MAC USP.

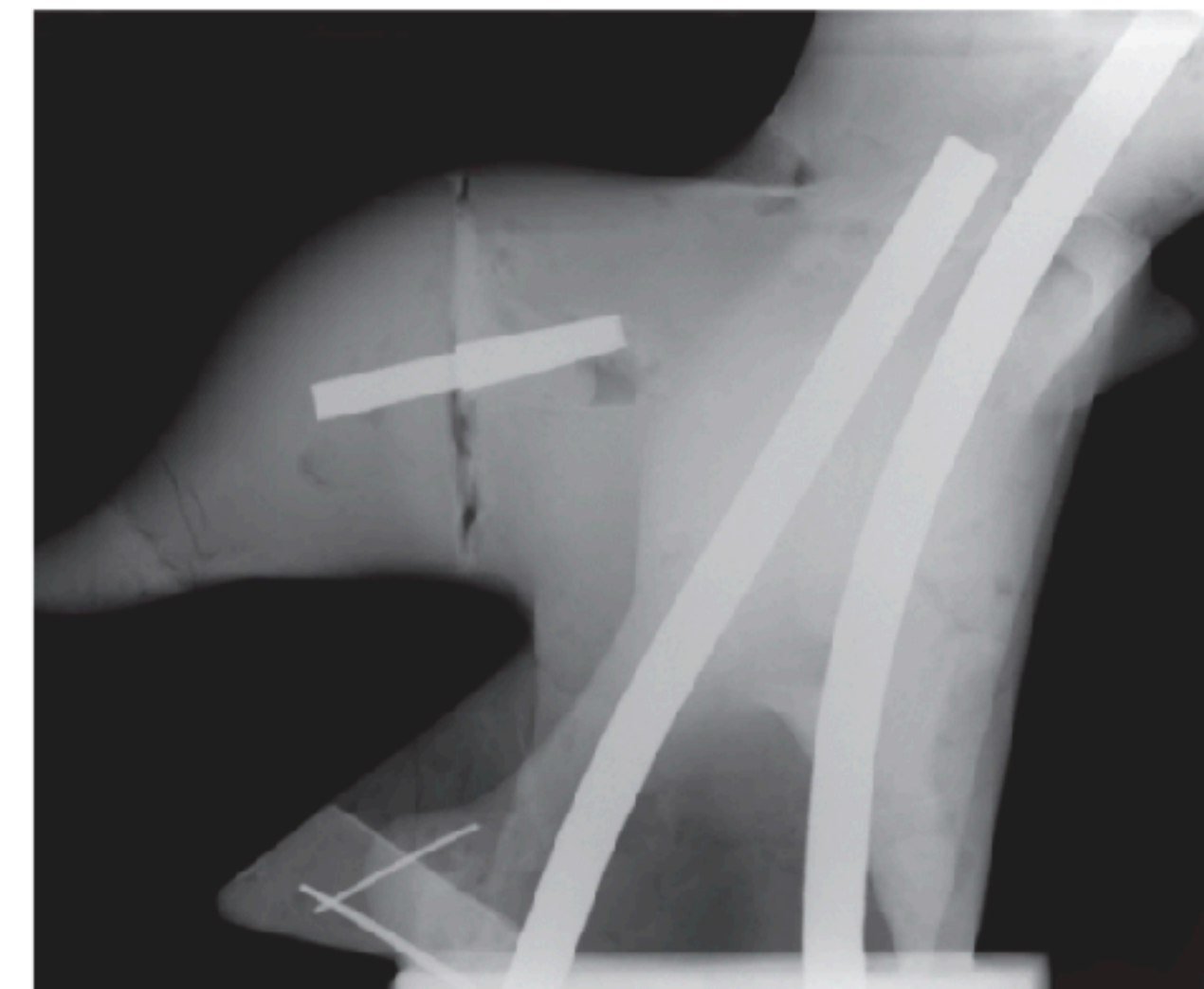


FIG. 14

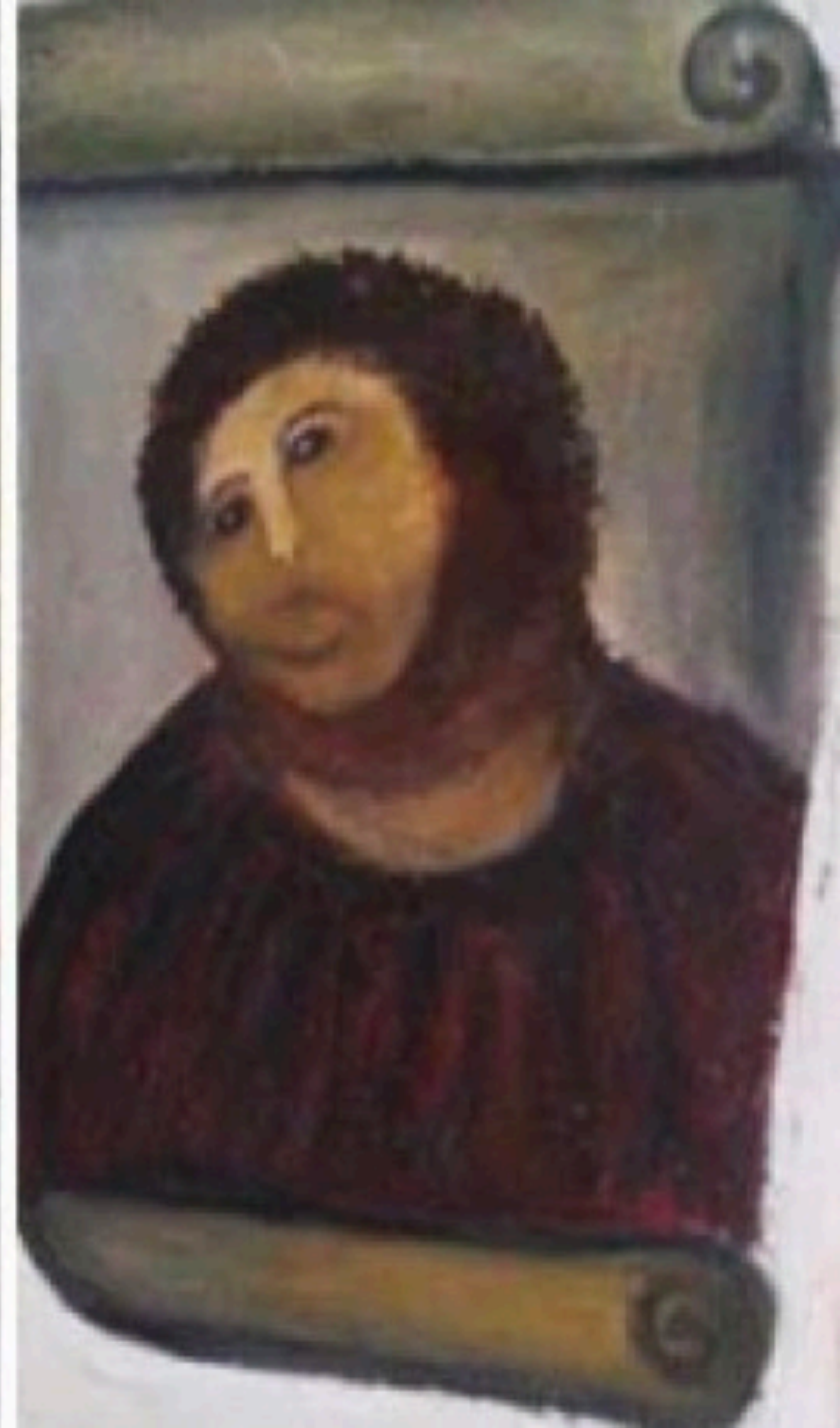
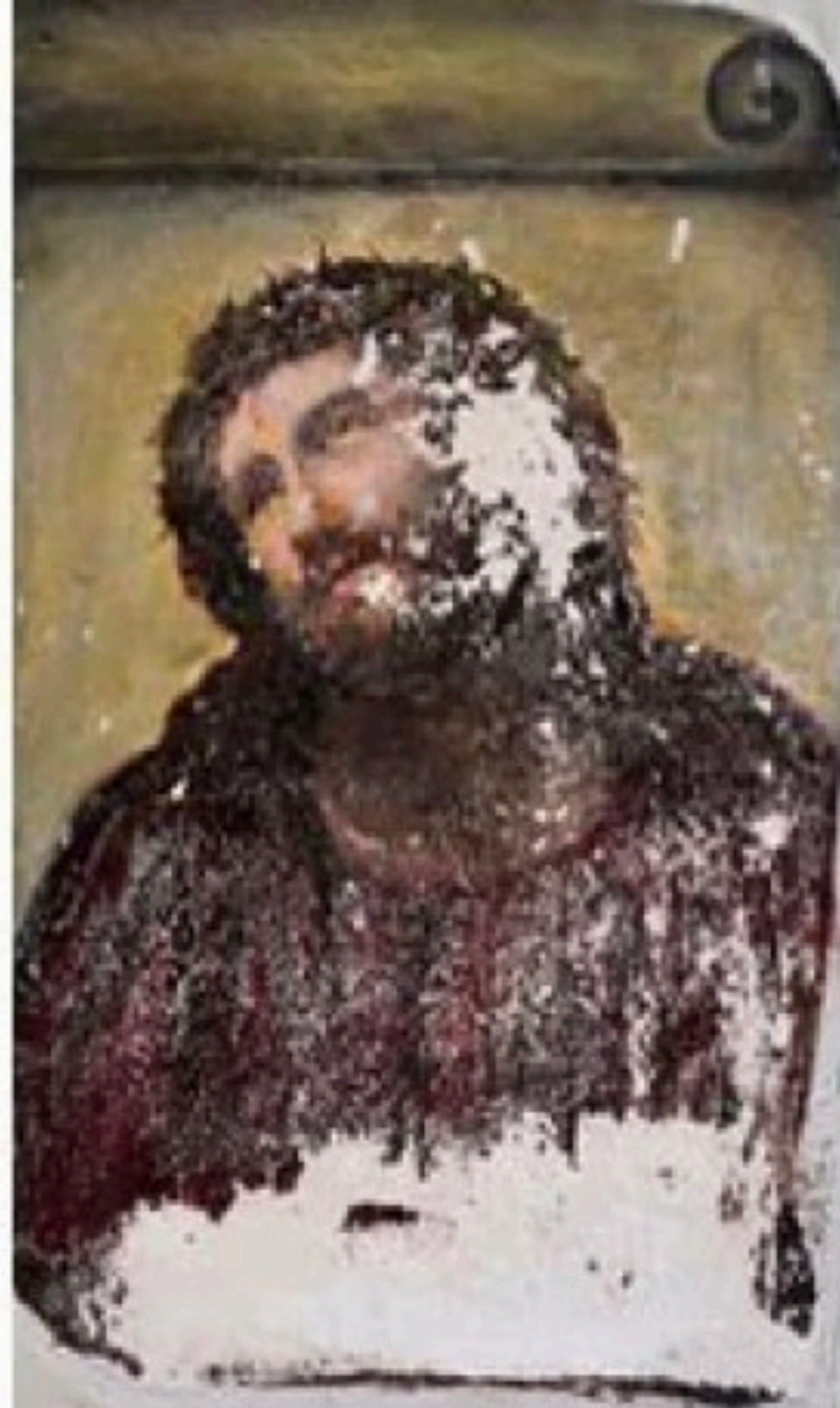
Detalhe da cauda da perna de trás do gesso, 2016.

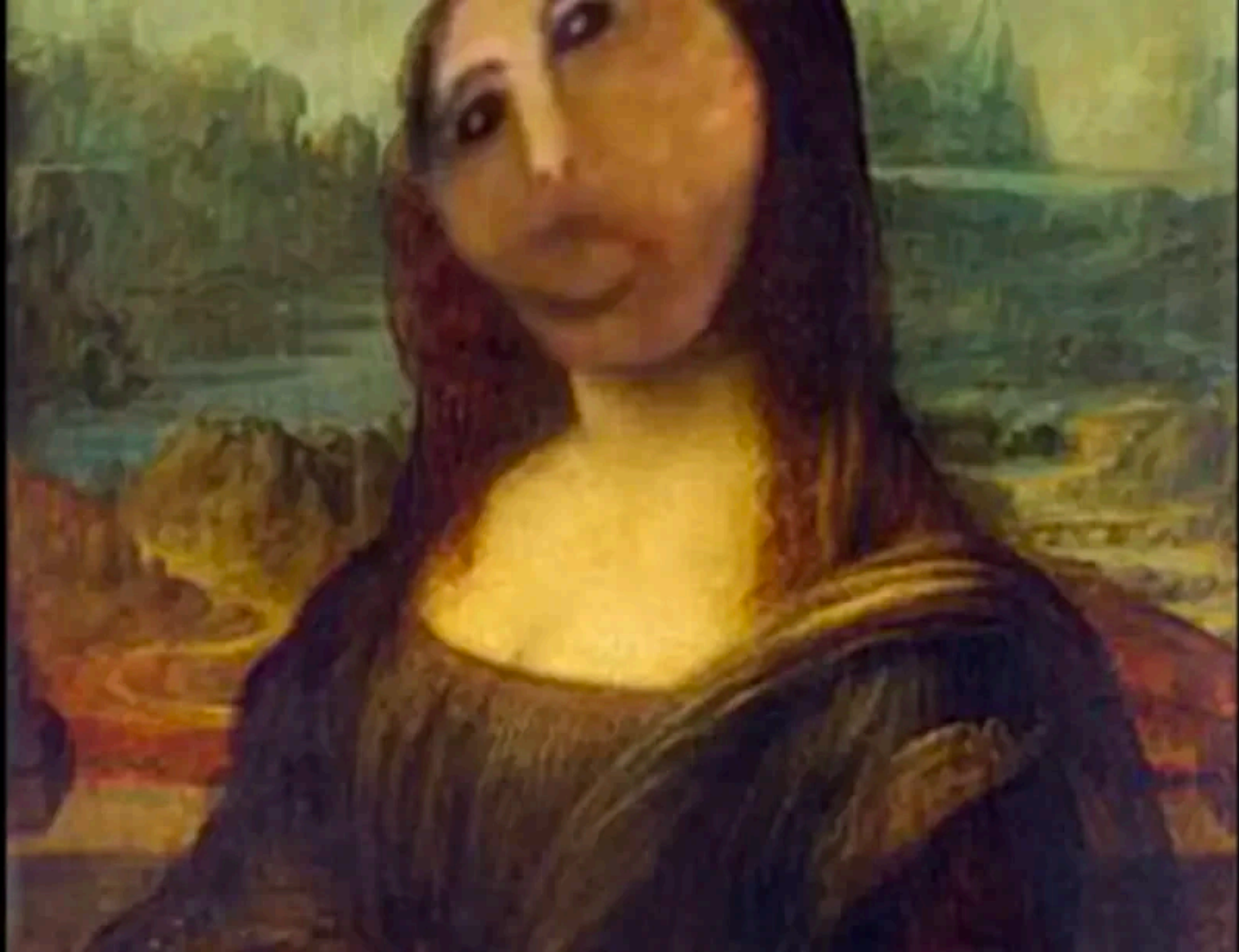
Análise por Imageamento. Profa. Dra. Márcia Rizutto, Nemitala Addec, Pedro Campos e Elizabeth Kajiya e Grupo de Dosimetria: Paulo Costa e equipe.

Detail of the tail of the back leg of the plaster, 2016.

Imaging Analysis. Profa. Dra. Márcia Rizutto, Nemitala Addec, Pedro Campos and Elizabeth Kajiya and Dosimetry Group: Paulo Costa and team.







OLHARES MAQUÍNICOS

Rijksmuseum + Microsoft (2020)

This method can find "visual analogies" that span culture, time, and medium



Double Face Banyan

anonymous
c. 1750 - c. 1800

Conditional
Image
Retrieval

By Media

By Culture



Metropolitan Museum NY + GA&C (2019)



The Harvesters

Pieter Bruegel the Elder 1565



From the collection of
The Metropolitan Museum of
Art



The Metropolitan Museum of Art

Google Arts & Culture

The Harvesters

Painting by Pieter Bruegel the Elder



The Harvesters is an oil painting on wood completed by Pieter Bruegel the Elder in 1565. It depicts the harvest time which most commonly occurred within the months of August and September. Nicolaes Jonghelinck, a merchant banker and art collector from Antwerp, commissioned this painting. [Wikipedia](#)

Artist: Pieter Bruegel the Elder

Location: Metropolitan Museum of Art

Created: 1565

Dimensions: 119 cm × 162 cm (46 ⁷/₈ in × 63 ³/₄ in)

Periods: Renaissance, Northern Renaissance, Dutch and Flemish Renaissance painting

Media: Wood, Oil paint

People also search for

[View 15+ more](#)



The Hay Harvest

Pieter Bruegel the Elder



The Return of the Herd

Pieter Bruegel the Elder



The Hunters in the Snow

Pieter Bruegel the Elder



The Gloomy Day

Pieter Bruegel the Elder



The Peasant Wedding

Pieter Bruegel the Elder

Cleveland Museum + Bing (2019)

Portrait of Clyde Morgan | Cl... x +

clevelandart.org/art/2021.224

Home → Art → Collections → Search

Search by artist, keyword, or reference

Portrait of Clyde Morgan

1993

Mario Cravo Neto
(Brazilian, 1947–2009)

Brazil

Gelatin silver print

Image: 47 x 57.1 cm (18 1/2 x 22 1/2 in.)

Gift of Carl and Joan Schneider 2021.224

LOCATION
not on view

DOWNLOAD AND SHARE

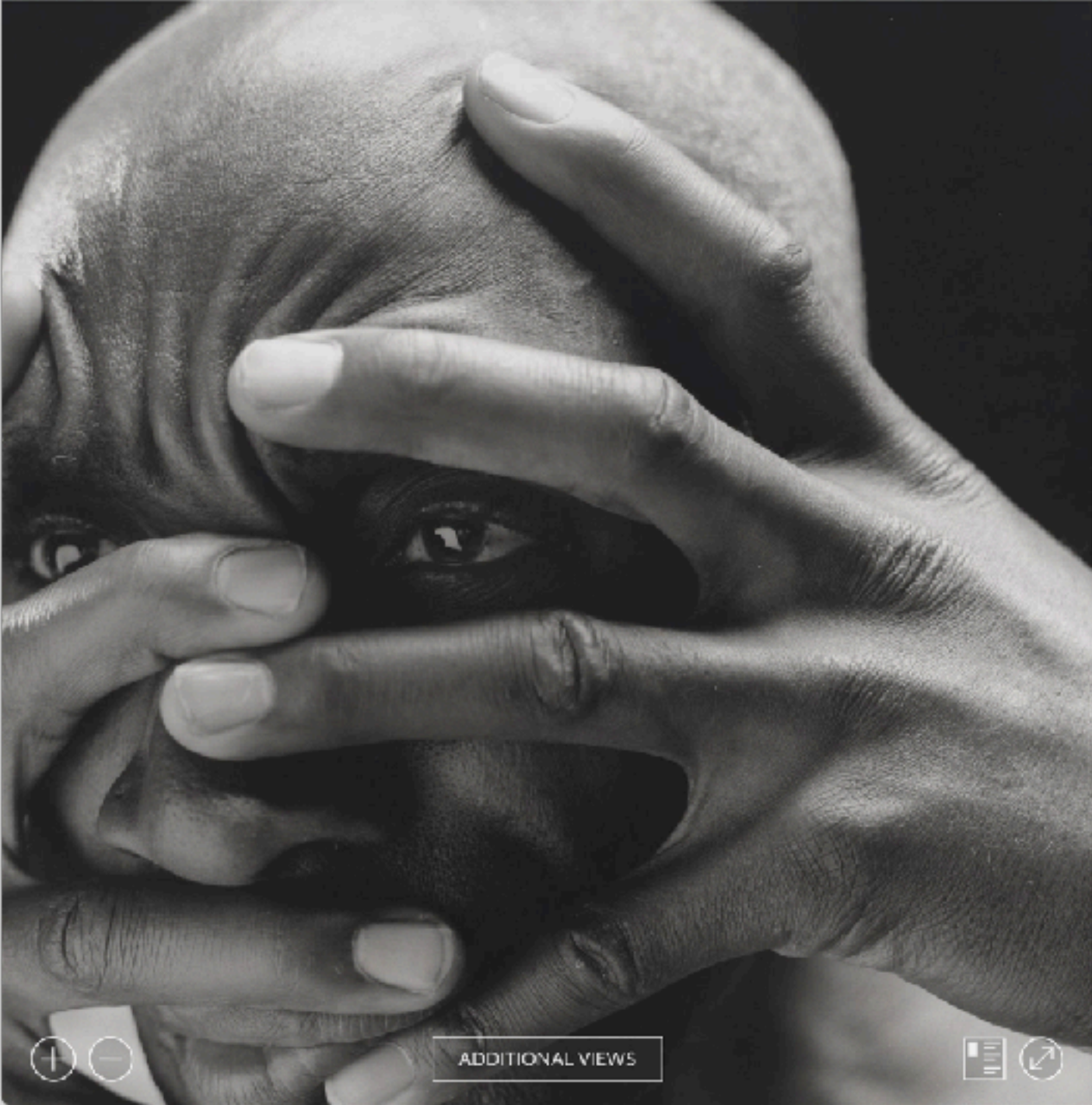
⬇️ © 📄 ↶

DID YOU KNOW?

One of Brazil's most important photographers, Mario Cravo Neto specialized in photographing Afro-Brazilian bodies engaged in religious and mystical acts.

DESCRIPTION

Here Mario Cravo Neto photographed an American dancer and choreographer, but one who was well acquainted with African and Brazilian as well as American modern dance. Cincinnati native Clyde Morgan received his earliest dance training at Cleveland's Karamu House and graduated from Cleveland State University. He



+

−


ADDITIONAL VIEWS

Portrait of Clyde Morgan | Cl... x +

clevelandart.org/art/2021.224#

Home → Art → Collections → Search

Search by artist, keyword, or reference



Africa and for ten years was Artistic Director and Choreographer for a contemporary dance group in Brazil.

⊕ **ARTIST BIOGRAPHY**

⊕ **PROVENANCE**

⊕ **CITE THIS PAGE**

SEE ALSO

Collection: [PH - Brazilian](#)

Department: [Photography](#)

Type of artwork: [Photograph](#)

Medium: [Gelatin silver print](#)

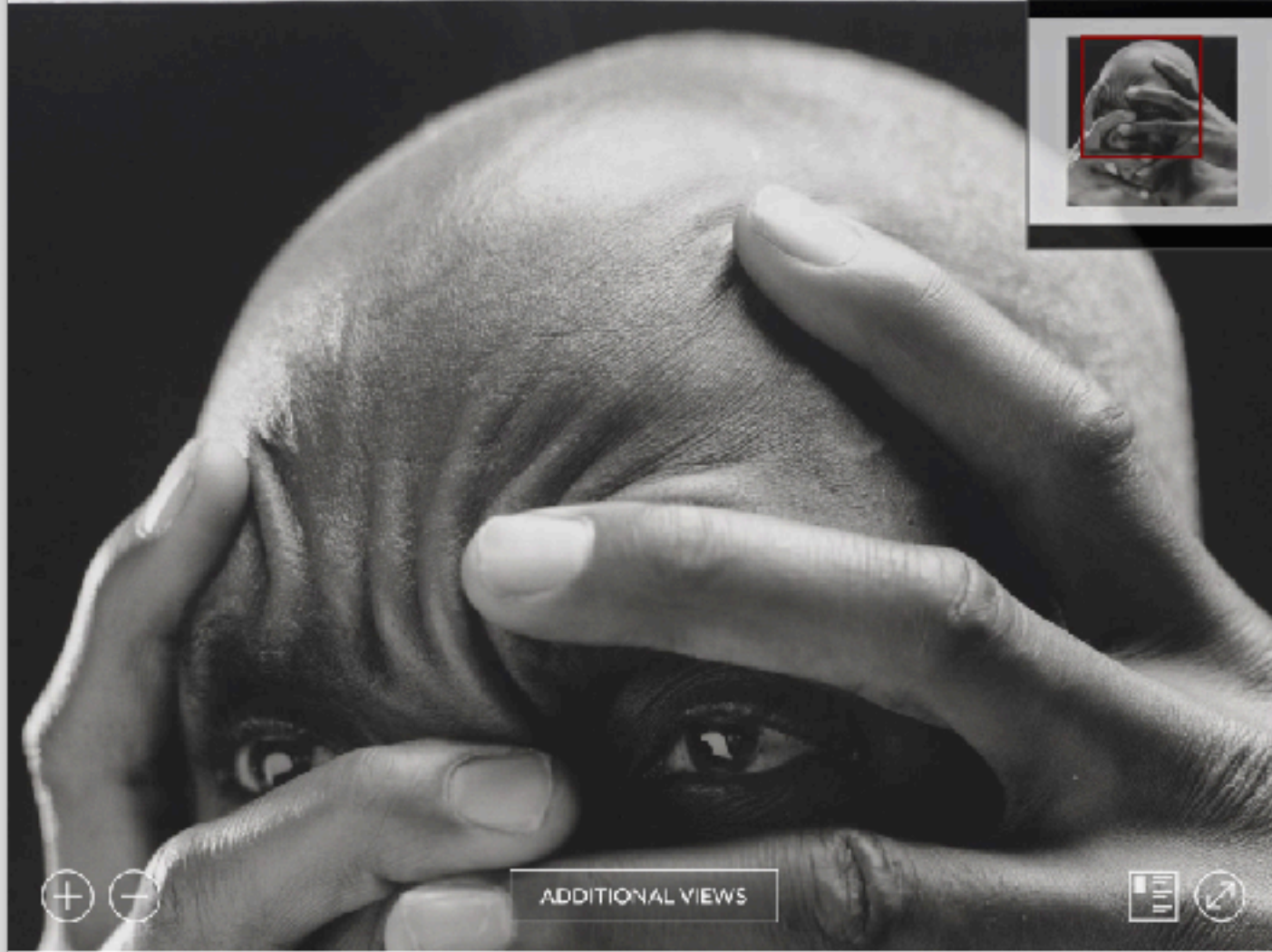
Credit line: Gift of Carl and Joan Schneider

CONTACT US

The information about this object, including provenance, may not be currently accurate. If you notice a mistake or have additional information about this object, please email collectionsdata@clevelandart.org.

To request more information about this object, study images, or bibliography, [contact the Legal Library Reference Desk](#).

All images and data available through [Open Access](#) can be downloaded for free. For images not available through Open Access, a detail image, or any image with a color bar, request a digital file from Image Services.





+

−

ADDITIONAL VIEWS

Apr 11, 2022

✓ Read more

Your view



Our match



Landscape near Painesville

Allen Smith (American, 1810–1891)



Barnes Foundation (2017)



COLORS



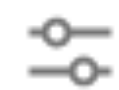
LINES



LIGHT



SPACE



SEARCH COLLECTION

Vertical

Diagonal

Horizontal

Curvy

Broken

Unbroken

All Types

— x

303 Results



Odilon Redon
Saint George and the Dragon (Saint Georges et le dragon)



Pierre-Auguste Renoir
Louveciennes



José Benito Ortega
Saint Barbara (Santa Barbara)



Howard Rackliffe
Winter Wharf



William James Glackens
Woman Seated on Red Sofa



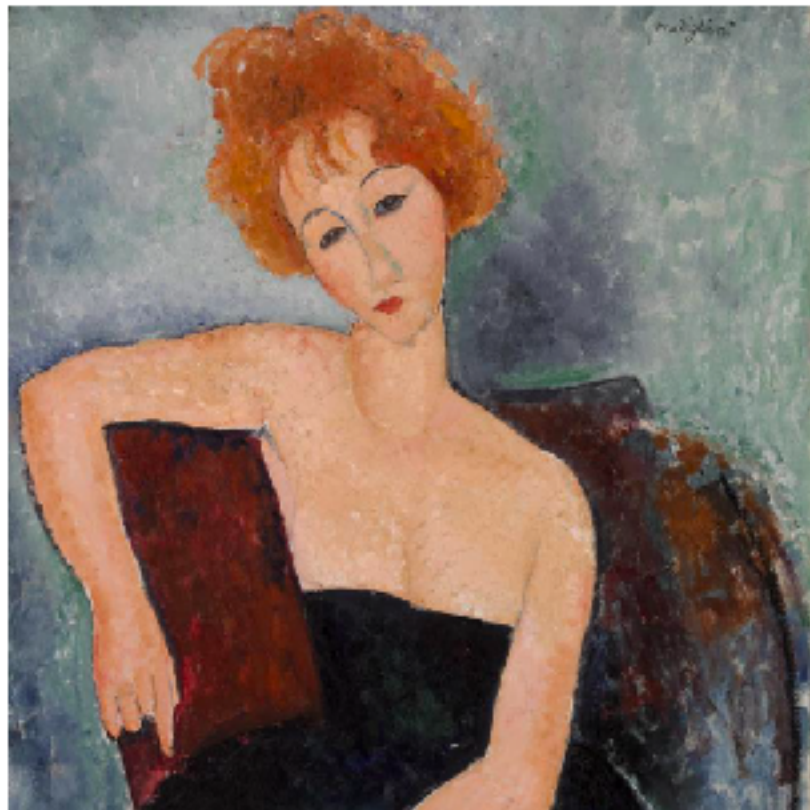
Paul Klee
Two Red Flowers (Zwei rote Blüten)

Amedeo Modigliani

Portrait of the Red-Headed Woman (Portrait de la femme rousse)

1918. Oil on canvas

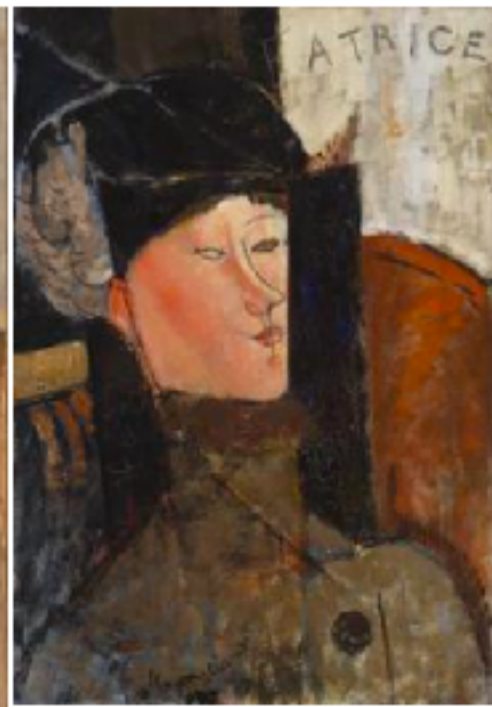
INFORMATION ENSEMBLE **VISUALLY SIMILAR**



More similar



More surprising



INFORMATION **ENSEMBLE** VISUALLY SIMILAR



Dr. Barnes arranged his collection in "ensembles"

SABEDORIA DAS MULTIDÕES

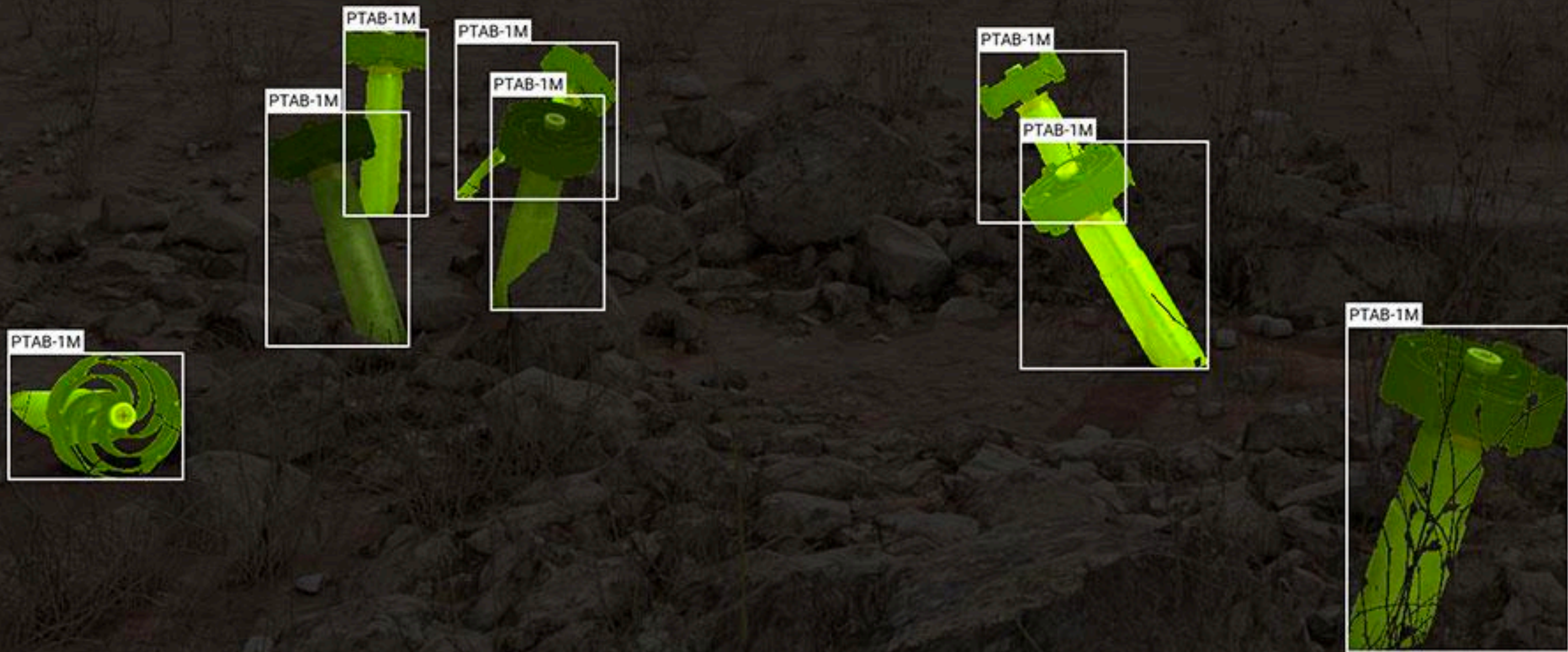


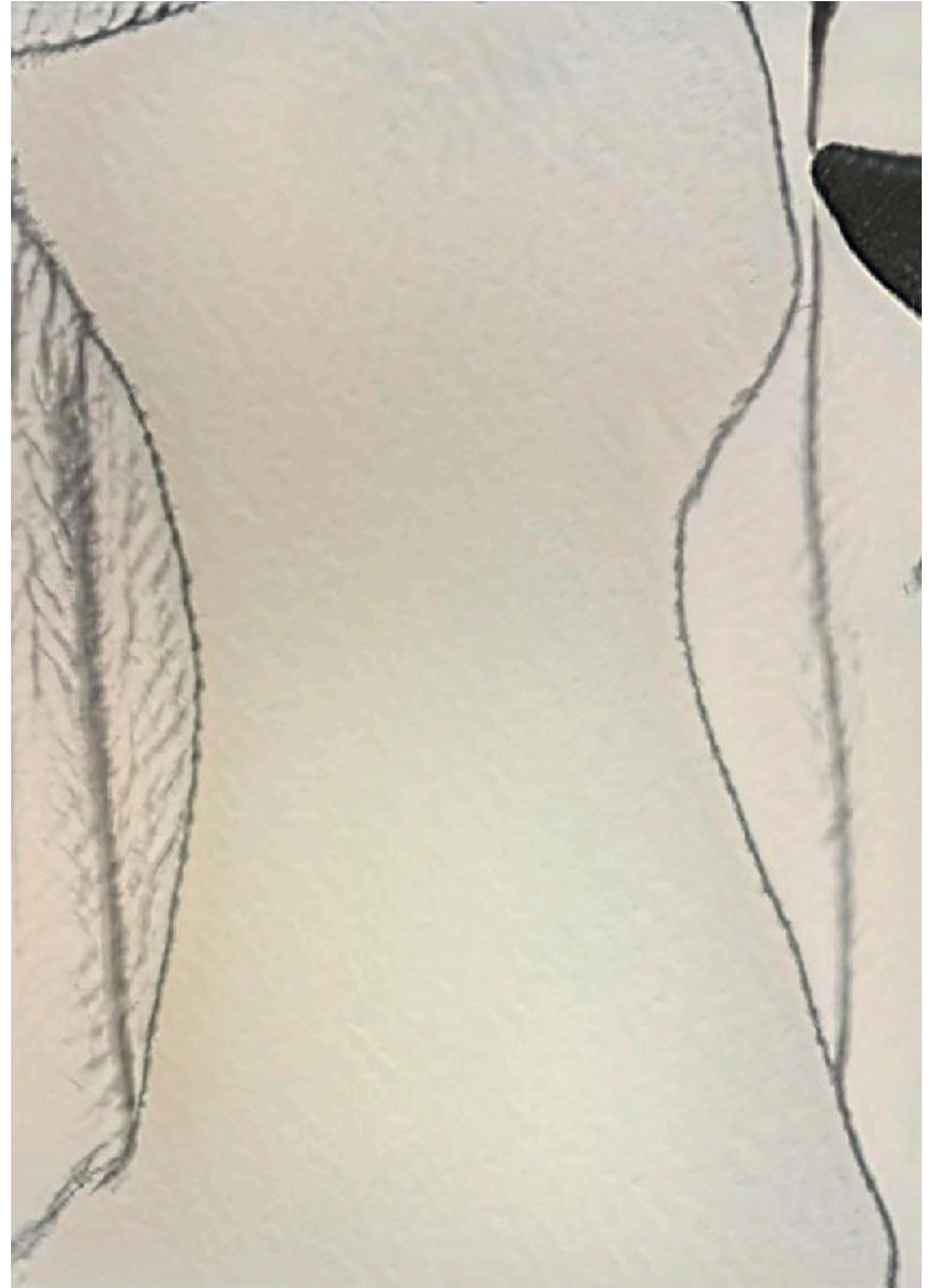
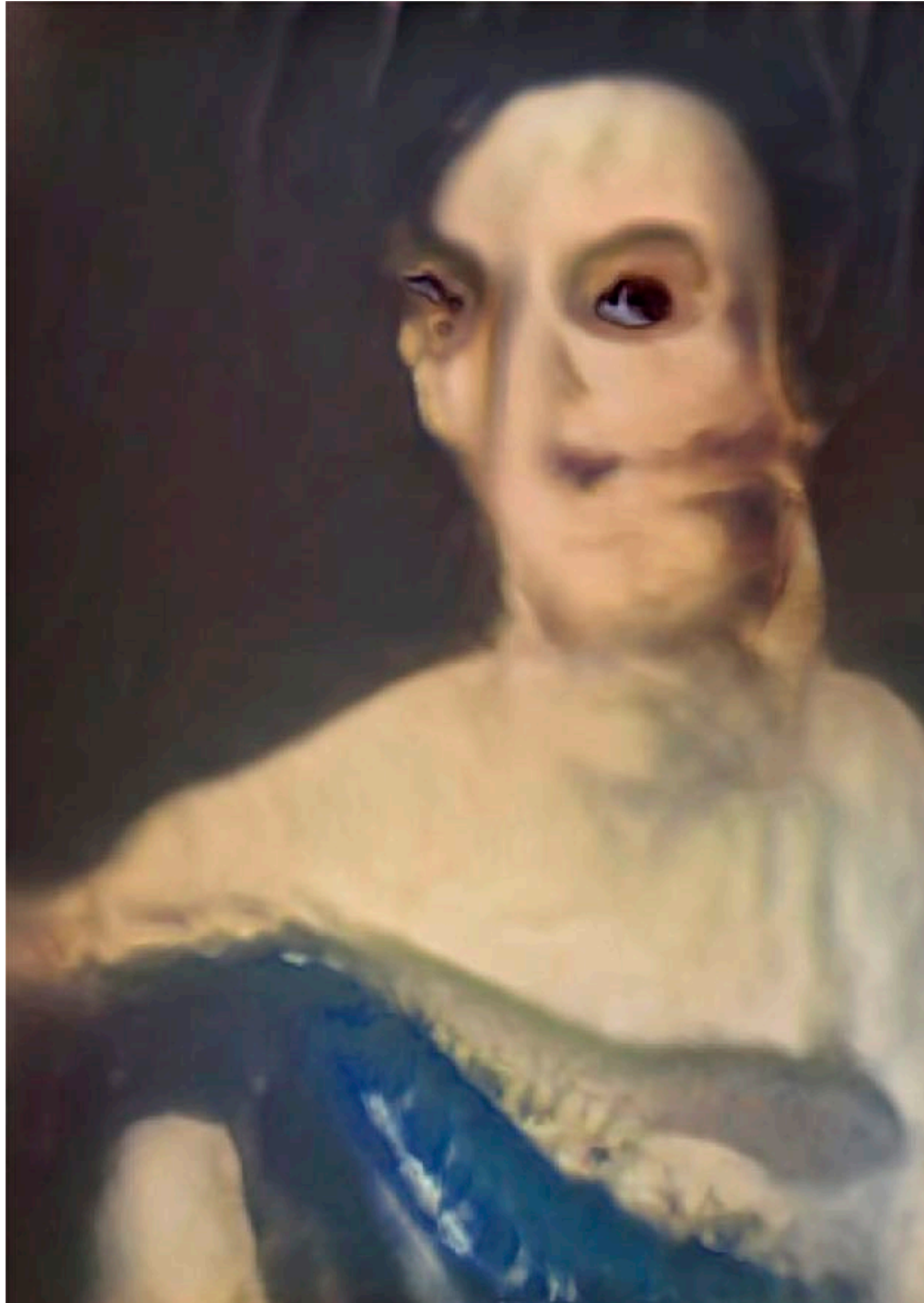
Erik Kessels, 24h in Photos

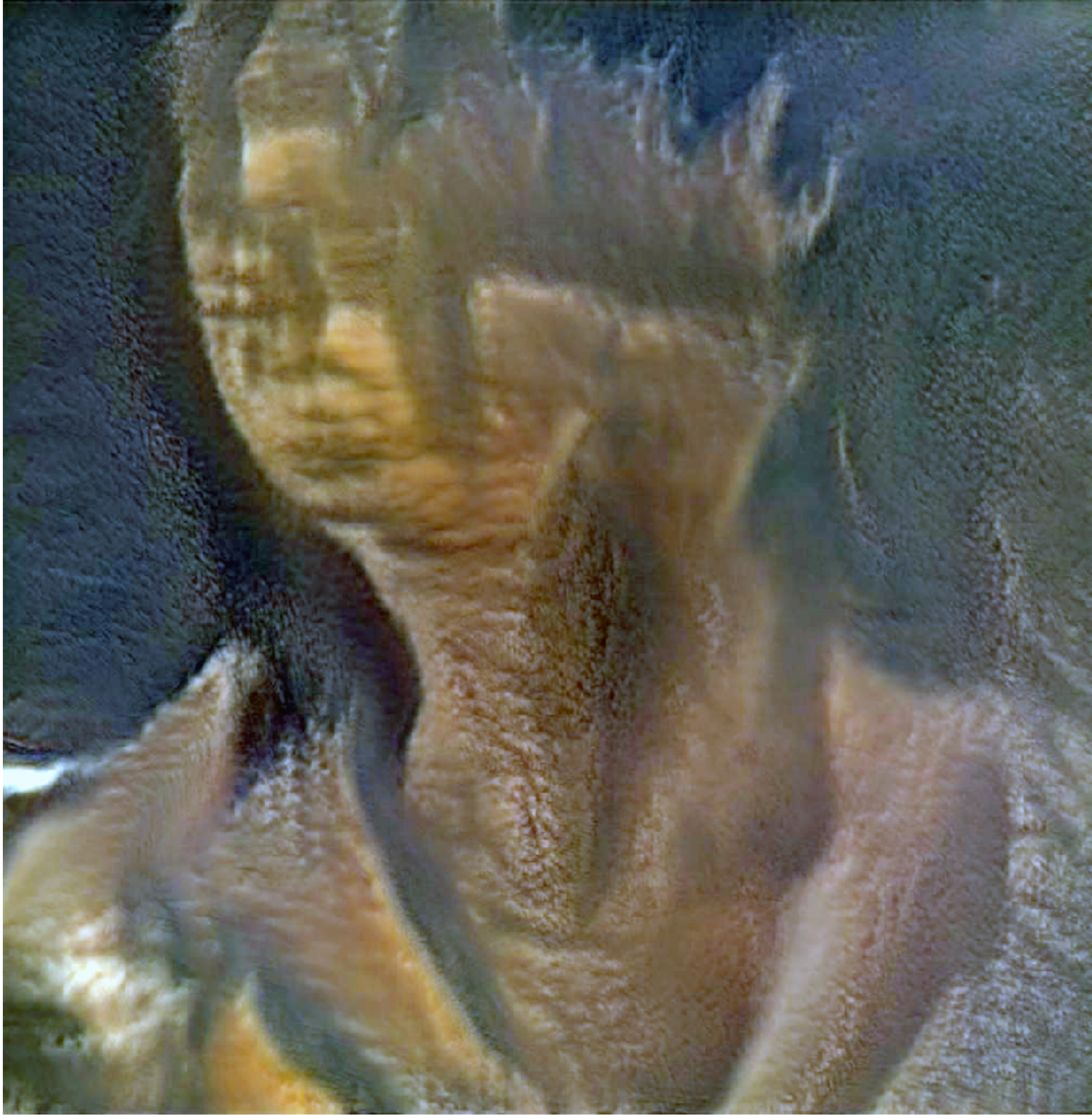




SYNTHETIC TRAINING DATA FOR CONFLICT ZONE OBJECTS
A0-2.5RT CLUSTER MUNITION (SYRIA)







“Nossa originalidade é nossa fome”

Glauber Rocha, A Eztetyka da Fome (1965)

“Museu é o mundo”

Helio Oiticica, 1966

GISELLE BEIGUELMAN

IG: @gbeiguelman

desvirtual.com | acervosdigitais.fau.usp.br



Projeto Temático - 2022/05946-9

